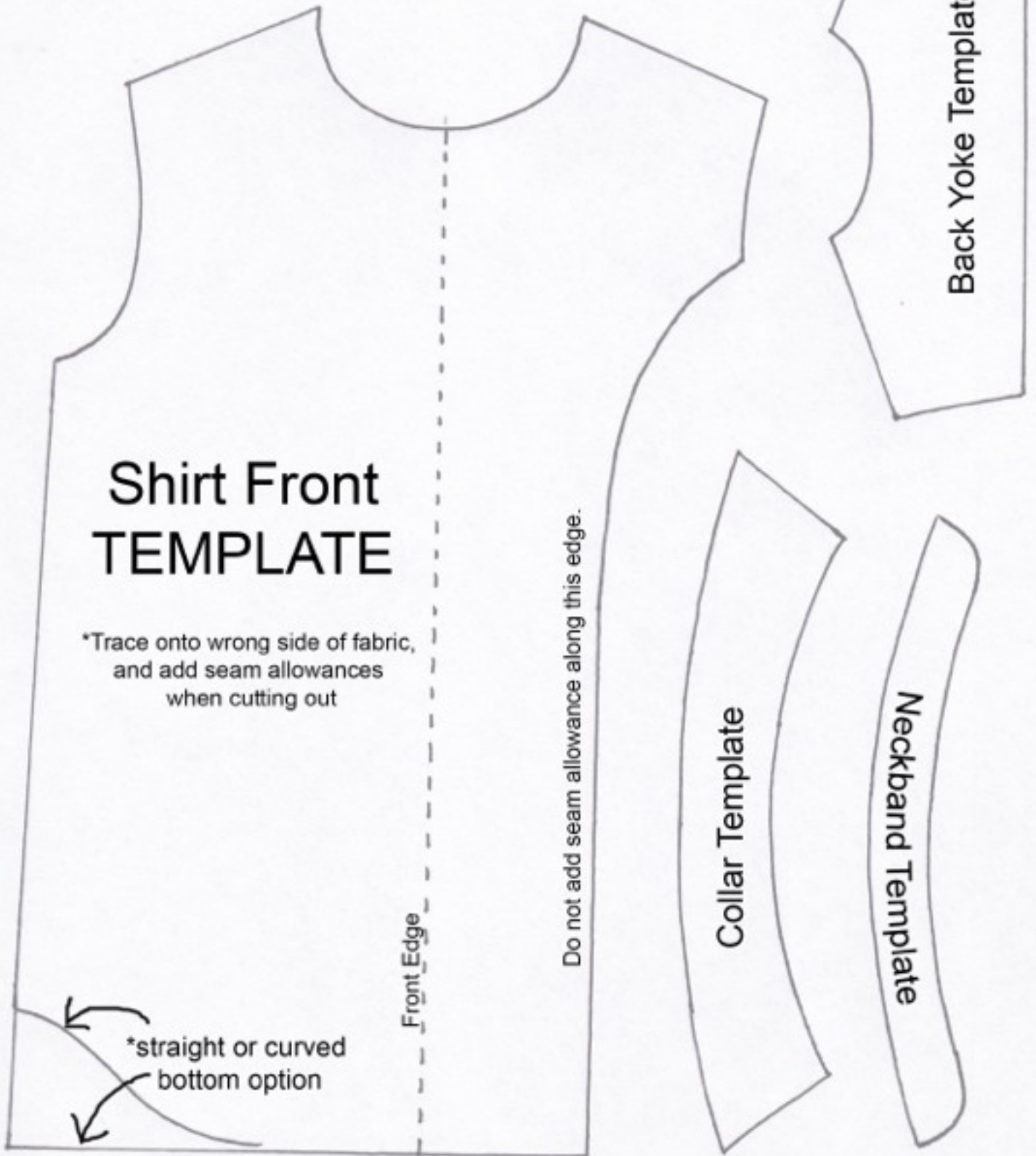
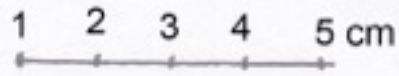
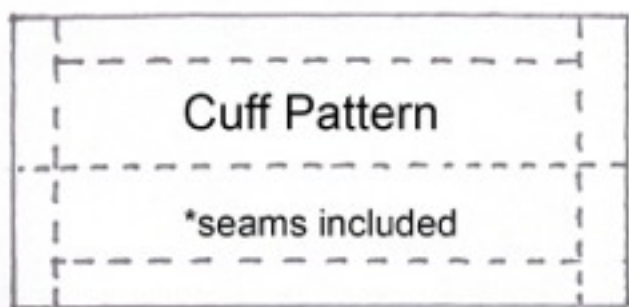
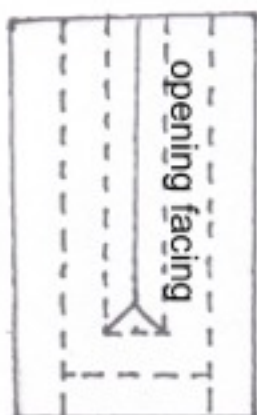
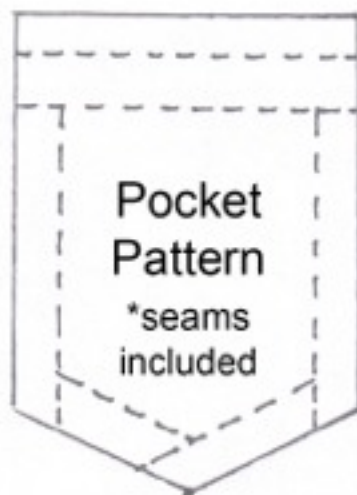
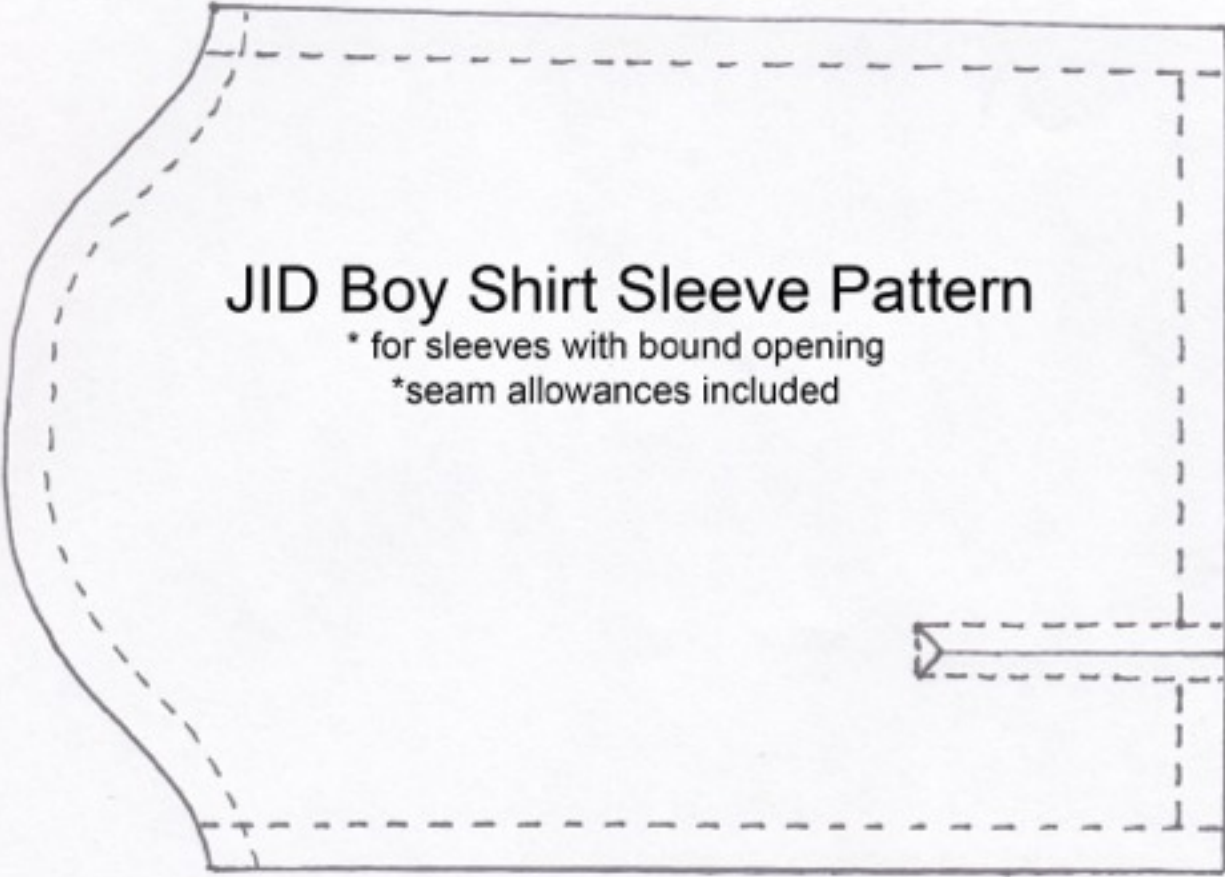


# JID Boy Shirt

Copyright © 2017 Martha Boers  
All Rights Reserved








This diagram shows a sleeve pattern with a bound opening. The pattern is rectangular with a curved, rounded left side. A dashed line indicates the seam allowance. On the right side, there is a small rectangular detail with a pointed end, likely representing a cuff or a specific seam construction. The text is centered within the pattern area.

## JID Boy Shirt Sleeve Pattern

\* for sleeves with bound opening

\*seam allowances included



This diagram shows a sleeve pattern with an opening in the underarm sleeve seam. The pattern is rectangular with a curved, rounded left side. A dashed line indicates the seam allowance. The text is centered within the pattern area.

## JID Boy Shirt Sleeve Pattern

\*for sleeves with opening in underarm sleeve seam

\*seam allowances included